

Multipak Slipcase Specifications: 7 mm cases

The following specifications are provided to ensure conformity to our insertion process of standard 7 mm DVD cases into an appropriately sized slipcase. **Materials which do not conform to the specifications set forth in these instructions may still be considered workable parts, but are subject to additional charges.**

Dimensional Requirements:

All finished materials must conform to the dimensional requirements set forth on the applicable product specification.

Paper Stock:

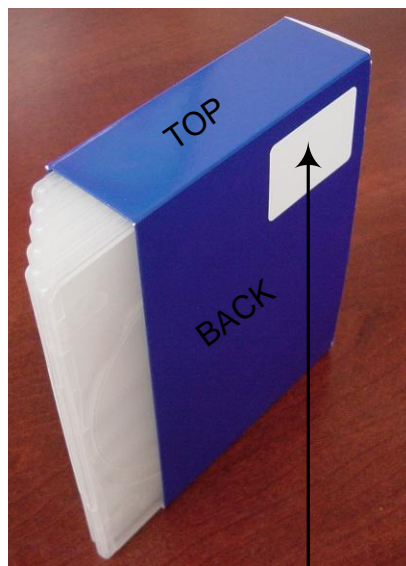
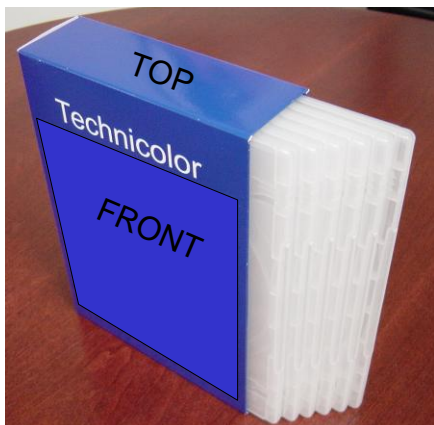
Material should be wood-free, non-porous, coated art paper.

Paper Thickness: 0.5mm

UV Coating and Varnishing:

UV coatings or varnish printed materials are accepted however high gloss coatings are vulnerable to damage which can affect the appearance of the finished product and may be incompatible with various equipment used in the packaging process.

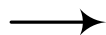
Slipcase:



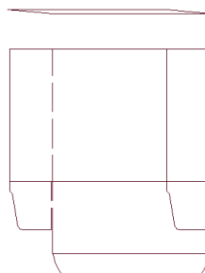
Suggested UPC Barcode location:

UPC is on the Upper right hand corner of the BACK of box.

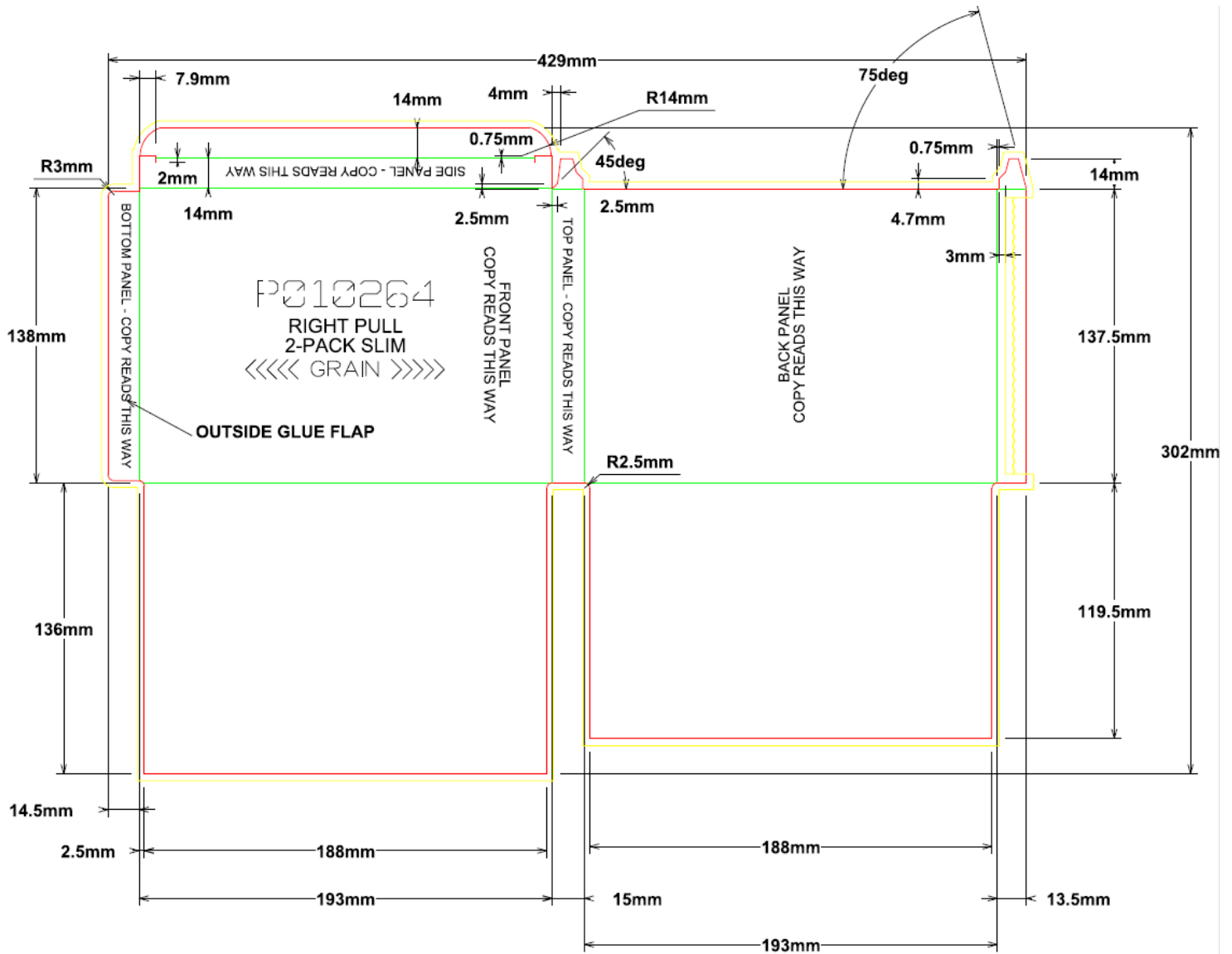
FOLD ORIENTATION:



Slipcases must be delivered flat, folded in the orientation shown.



Multipak Slipcase Specifications: 7 mm cases

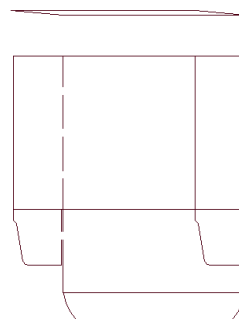


Bottom Tab edge must be 1/16" below box edge when assembled.

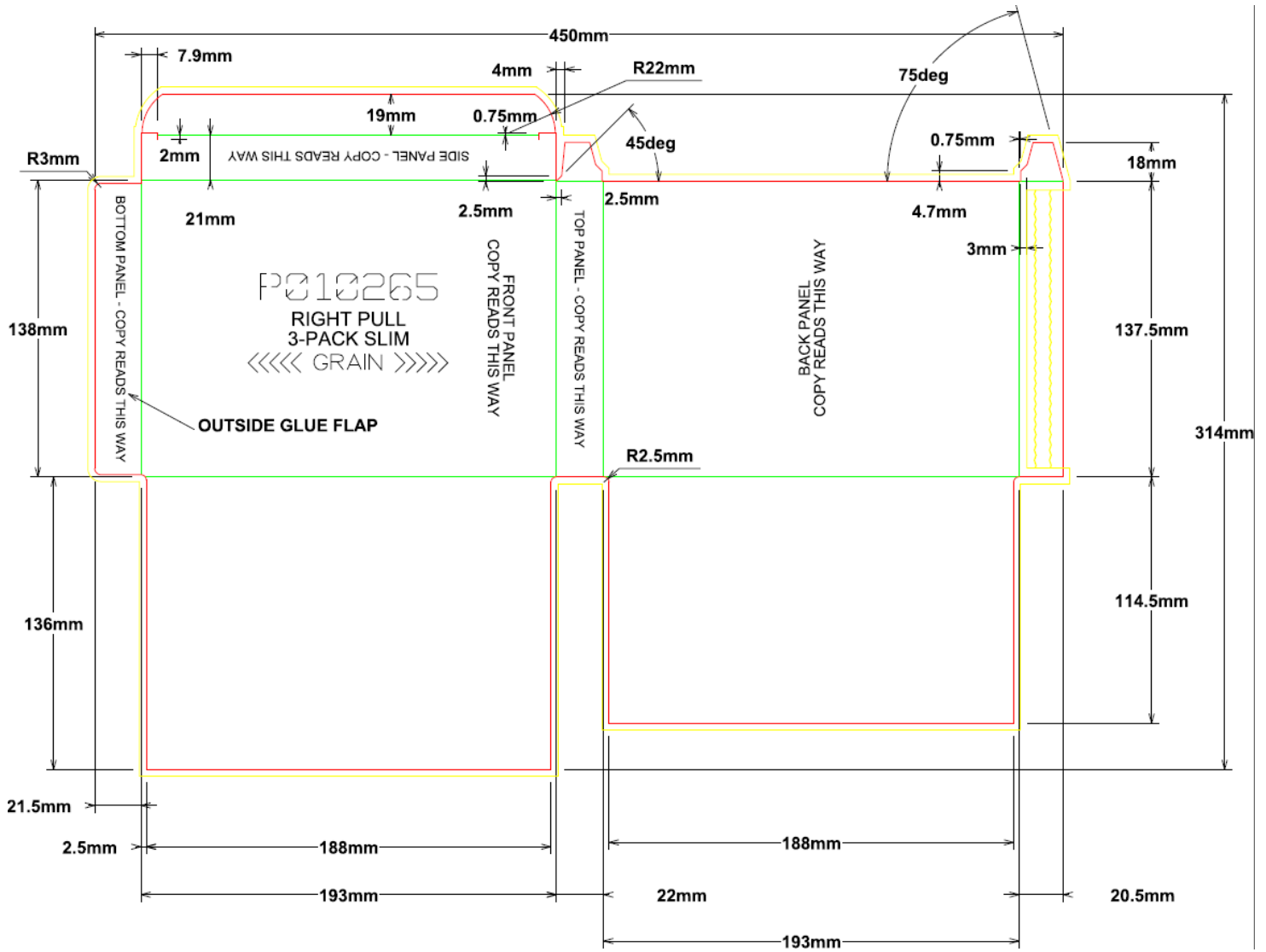
Standard delivery:
Blank folded as shown (not erected)

Paper Thickness: 0.5 mm

Folding edges have to be executed in a way that the collapsible cardboard box can be erected easily.



Multipak Slipcase Specifications: 7 mm cases

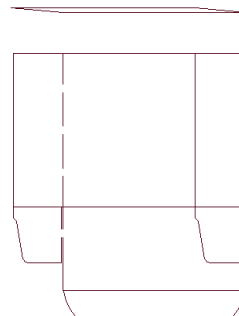


Bottom Tab edge must be 1/16" below box edge when assembled.

Standard delivery:
Blank folded as shown (not erected)

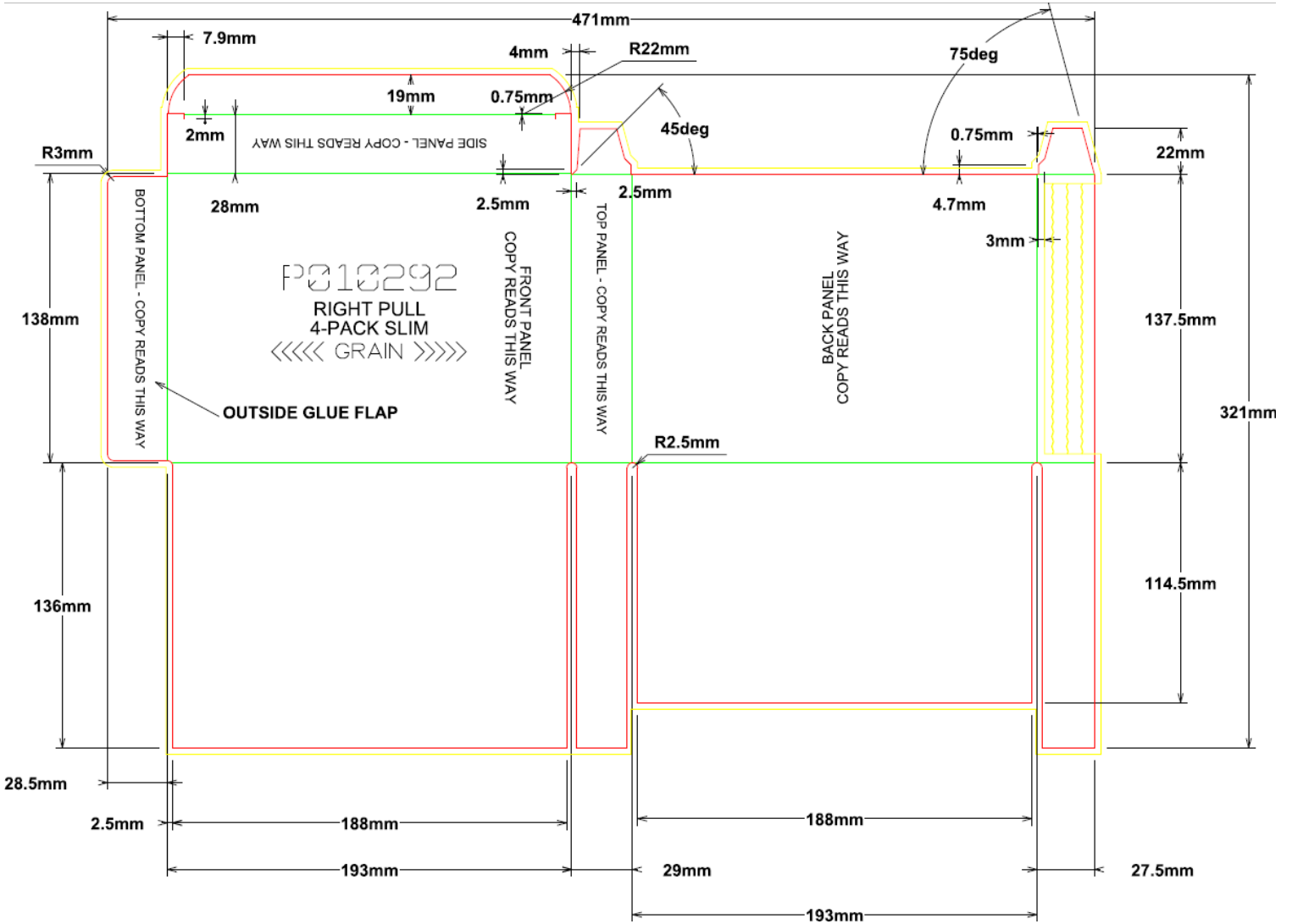
Paper Thickness: 0.5 mm

Folding edges have to be executed in a way that the collapsible cardboard box can be erected easily.





Multipak Slipcase Specifications: 7 mm cases

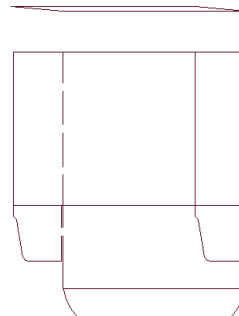


Bottom Tab edge must be 1/16" below box edge when assembled.

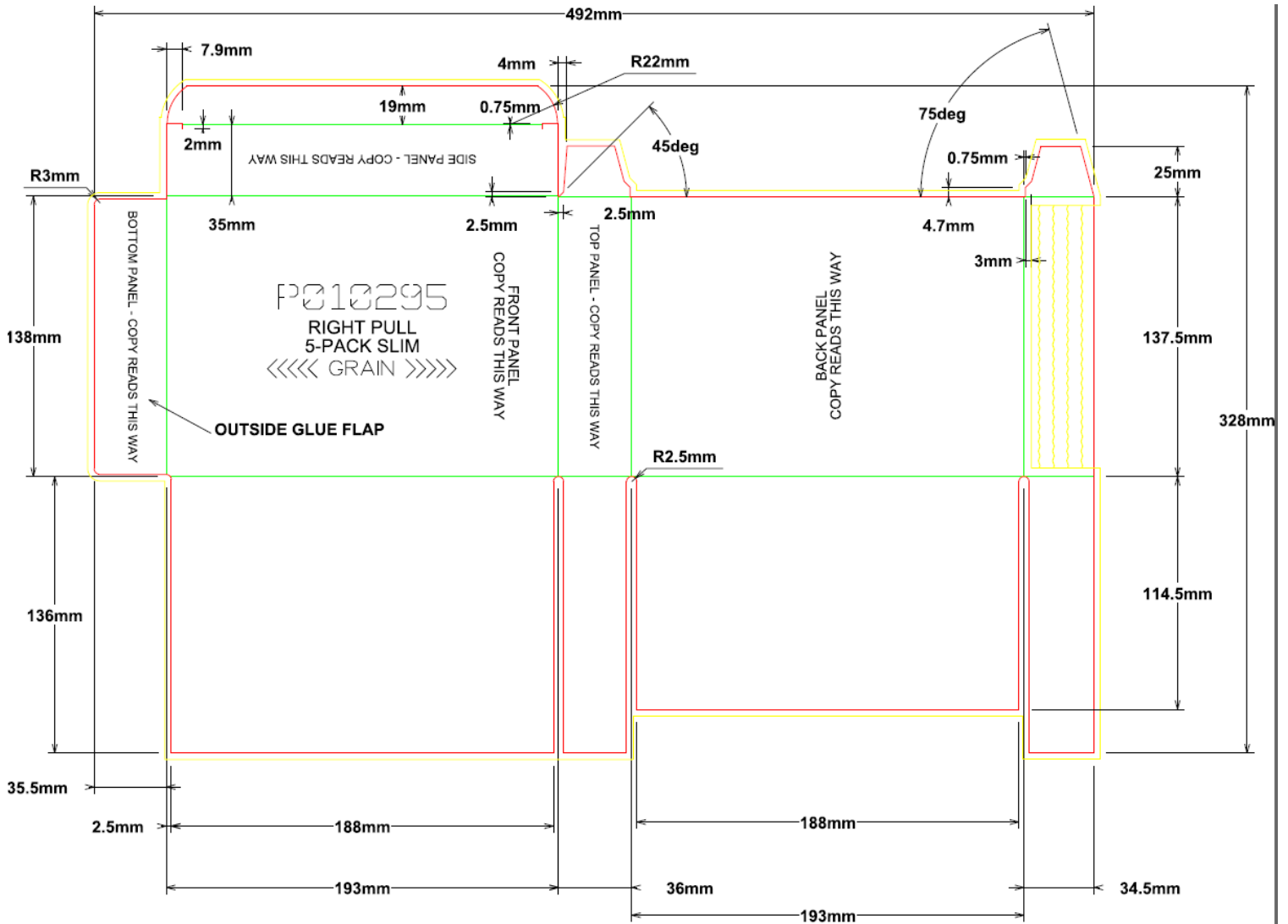
Standard delivery:
Blank folded as shown (not erected)

Paper Thickness: 0.5 mm

Folding edges have to be executed in a way that the collapsible cardboard box can be erected easily.



Multipak Slipcase Specifications: 7 mm cases

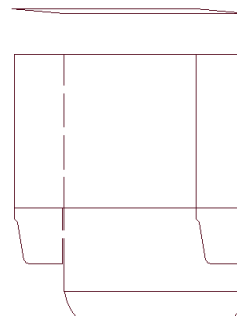


Bottom Tab edge must be 1/16" below box edge when assembled.

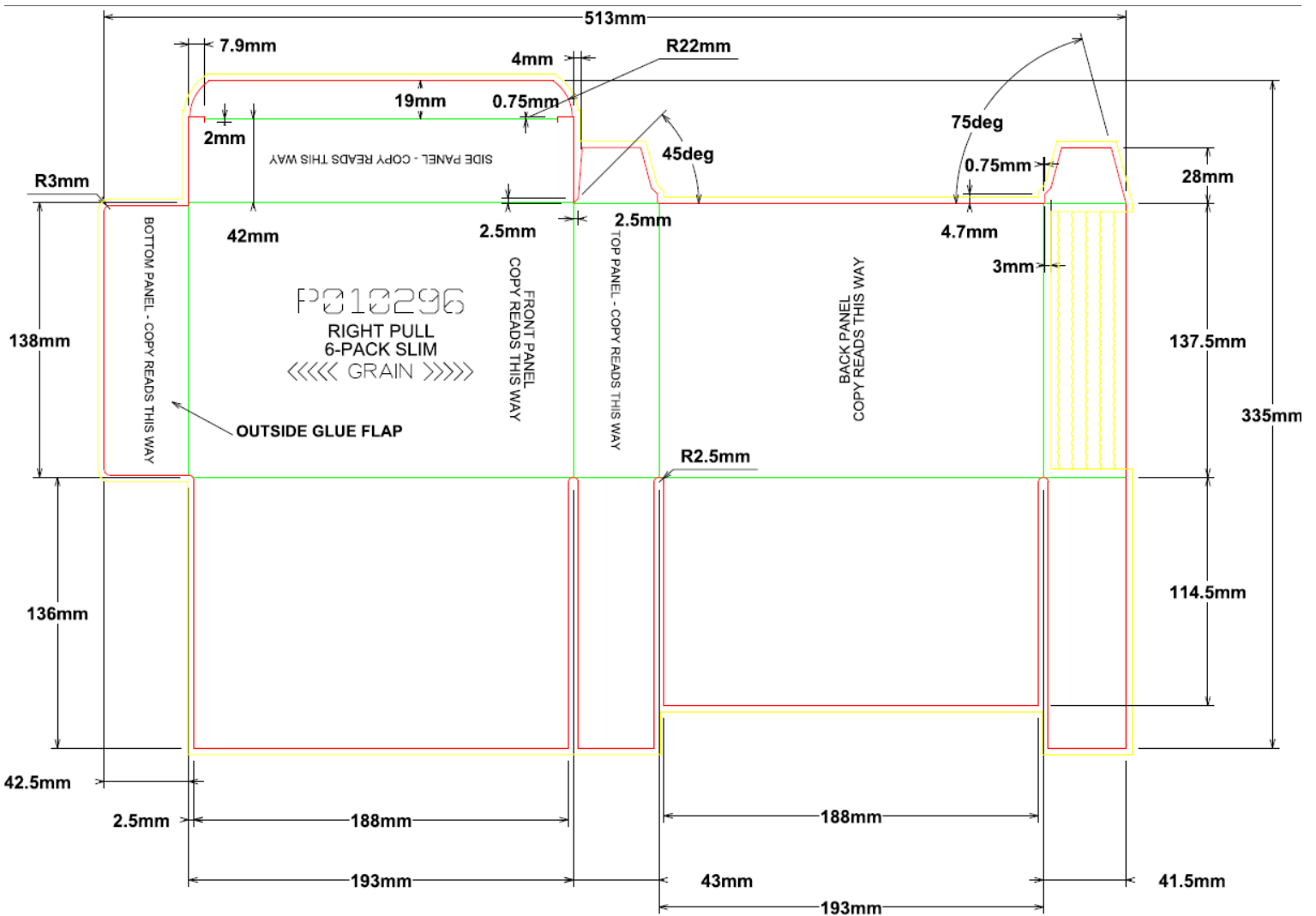
Standard delivery:
Blank folded as shown (not erected)

Paper Thickness: 0.5 mm

Folding edges have to be executed in a way that the collapsible cardboard box can be erected easily.



Multipak Slipcase Specifications: 7 mm cases



Bottom Tab edge must be 1/16" below box edge when assembled.

Standard delivery:
Blank folded as shown (not erected)

Paper Thickness: 0.5 mm

Folding edges have to be executed in a way that the collapsible cardboard box can be erected easily.

